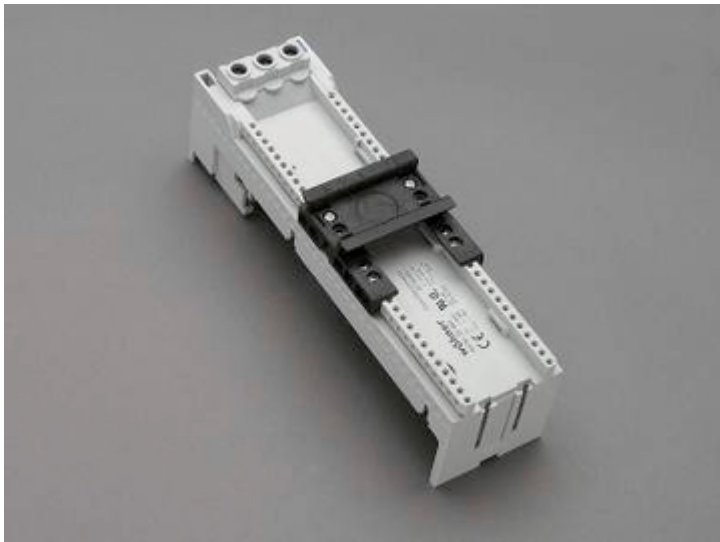


busbar adapter 80 A (32464)



The picture may show a similar product.

Description

Part No.: 32464

EQUES[®] 60Classic

busbar adapter 80 A

1 adjustable mounting rail

54 x 200, without leads, with terminals 1.5 - 16 mm², front operated
for busbars 12, 15, 20, 25, 30 x 5, 10 and section busbars

System

60Classic

Advantages of the product

Free phase selection.

Click mechanism when pushing onto the busbar.

Product group 05

Subgroup 27

pack size 4
EAN 4021267324643

catalog page 2020 : 3.12

eCl@ss 6.1 27370304
eCl@ss 7.1 27370304
ETIM 4.0 EC001531
ETIM 5.0 EC001531

Approvals

Standards

IEC 61439-1:2011
GB/T 7251.1
UL 508

Approvals

CSA , UL , DNV GL , EAC



type number: EEC6080
EAC Type: EQ

UL file: E123577, UL category (for USA): NMTR2 <http://www.ul.com>
UL file: E123577, UL category (for Canada): NMTR8 <http://www.ul.com>
CSA file: 110285, CSA class: 3211-37 <http://directories.csa-international.org>
CCC approval: no certification required

Technical data

Details IEC

Standards

IEC 61439-1:2011

Electrical data IEC

Rated current (IEC): 80 A
rated voltage (IEC) AC: 690 V

rated isolation voltage U_i AC: 800 V

rated surge voltage U_{imp} : 6 kV

max. permitted voltage (IEC) DC 800 V

short-circuit withstandability: the short-circuit capacity of the combination of adapter and motor starter depends on the motor starter

power dissipation of the article:

The power dissipation at a typical load of 80 % results to 6.0 W.

(The power dissipation at full load would be 9.3 W.)

Details UL

Standards

UL 508

Electrical data UL

rated current (UL): 80 A

rated voltage (UL) AC: 600 V

rated frequency (UL): 50 / 60 Hz

Mechanical data

W x H x D: 54 x 200 x 63

weight: 37.3 kg/100

poles: 3-pole

for busbars: 12, 15, 20, 25, 30 x 5, 10 and section busbars

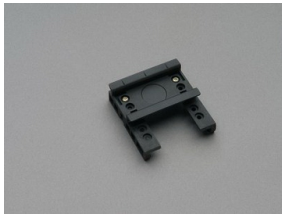
Terminal points

Cu 1.5 - 16 mm² re, rm, f, f+AE

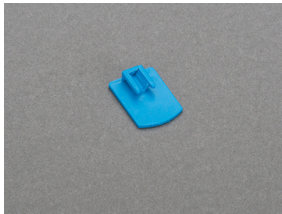
Reference

For compact mounting of complete motor circuits with commercially available switchgear and safe mechanical and electrical connection to the busbar system.

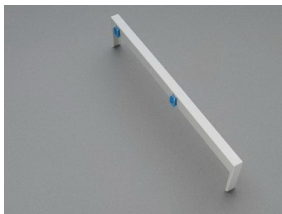
Accessories



32948
mounting rail 54 mm
for busbar adapters



32969
mounting rail end stop



32963
side-mounted module for busbar adapters
attachable to both sides
9 x 200
for: EEC60..



32914
lead AWG 4 (25 mm²), 210 mm long



32953
positioning piece for Siemens S2
NEW



32900
lead AWG 6 (16 mm²), 210 mm long
NEW



32907

lead AWG 10 (6 mm²), 130 mm long



32915

double-lead 2x AWG 10 (2x 6 mm²), 130 / 280 mm long



32916

lead AWG 10 (6 mm²), 280 mm long

NEW



32921

lead AWG 14 (2.5 mm²), 105 mm long



32929

lead AWG 12 (4 mm²), 190 mm long

NEW



32935

lead AWG 10 (6 mm²), 190 mm long

NEW



32936

lead AWG 8 (10 mm²), 190 mm long

NEW



32918

lead AWG 14 (2.5 mm²), 190 mm long

NEW